

# THRALL ISD

## ELEMENTARY SCHOOL

### CONSTRUCTION UPDATE

- FIRST LAYER OF BASE, BLUE TOP, INSTALLATION IS COMPLETE.
- CURB AND GUTTER LAYOUTS ARE COMPLETE.
- CURB AND GUTTER FORMING AND PLACEMENT ARE IN PROGRESS.



### COST SUMMARY

Construction Contingency Balance:	\$1,232,557
Owner Contingency Balance:	\$700,000
Total Budget:	\$38,092,458
Total Completed & Stored To Date:	\$7,842,442
Percentage Complete:	21%



DIFFERENT FROM THE GROUND UP

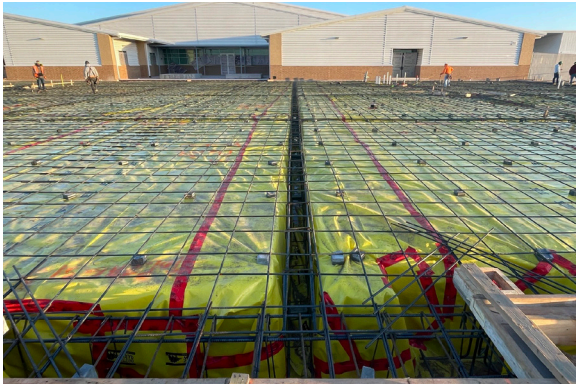


# THRALL ISD

## HIGH SCHOOL

### CONSTRUCTION UPDATE

- BEAMS AND DOOR INSTALLATIONS ARE COMPLETE.
- SLAB POUR IS COMPLETE.
- PRE-ENGINEERED METAL BUILDING ERECTION IS SCHEDULED TO BEGIN SOON.



### COST SUMMARY

Construction Contingency Balance:	\$678,427
Owner Contingency Balance:	\$300,000
Total Budget:	\$11,745,461
Total Completed & Stored To Date:	\$1,962,724
Percentage Complete:	17%



DIFFERENT FROM THE GROUND UP