

# THRALL ISD

## ELEMENTARY SCHOOL

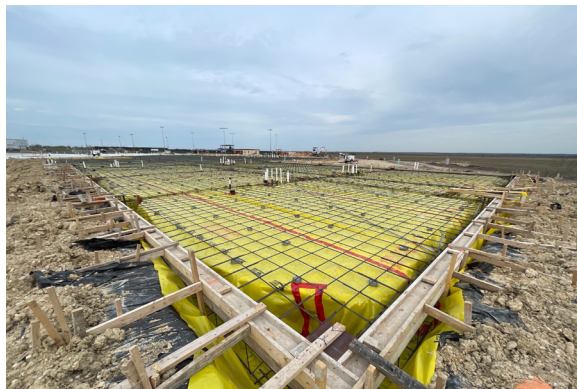
### CONSTRUCTION UPDATE

- WING A CORE SLAB WORK IS COMPLETE.
- PAVING LIME AND BASE WORK IS IN PROGRESS.
- CURB AND GUTTER INSTALLATIONS ARE IN PROGRESS.



### COST SUMMARY

Construction Contingency Balance:	\$1,232,557
Owner Contingency Balance:	\$700,000
Total Budget:	\$38,092,458
Total Completed & Stored To Date:	\$6,972,149
Percentage Complete:	18%



DIFFERENT FROM THE GROUND UP



# THRALL ISD

## HIGH SCHOOL

### CONSTRUCTION UPDATE

- CONCRETE PLANTER INSTALLATIONS ARE COMPLETE.
- COURTYARD STAMPED CONCRETE WORK IS COMPLETE.
- TRENCH DRAIN INSTALLATIONS ARE COMPLETE.
- SLAB FOOTING AND BEAM WORK IS IN PROGRESS.



### COST SUMMARY

Construction Contingency Balance:	\$678,427
Owner Contingency Balance:	\$300,000
Total Budget:	\$11,745,461
Total Completed & Stored To Date:	\$926,054
Percentage Complete:	08%



DIFFERENT FROM THE GROUND UP



GALLAGHER  
A CUMMING GROUP COMPANY